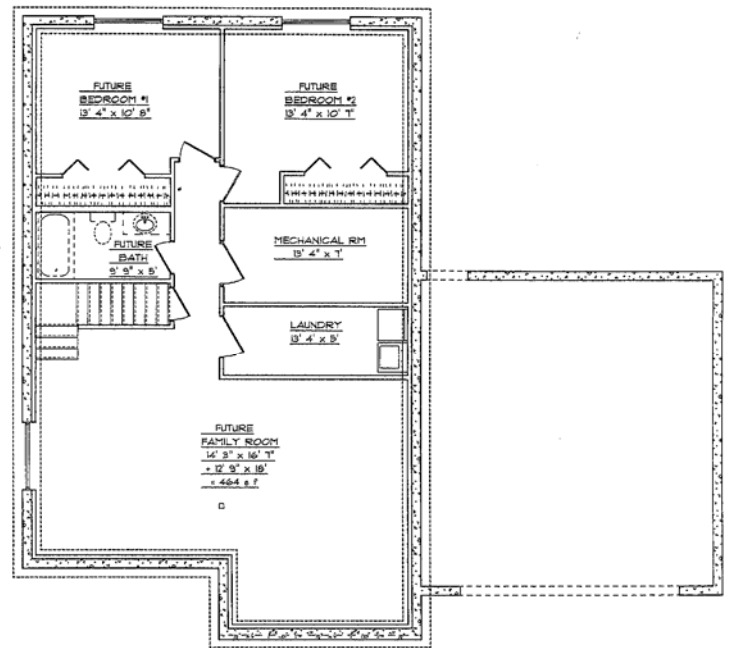
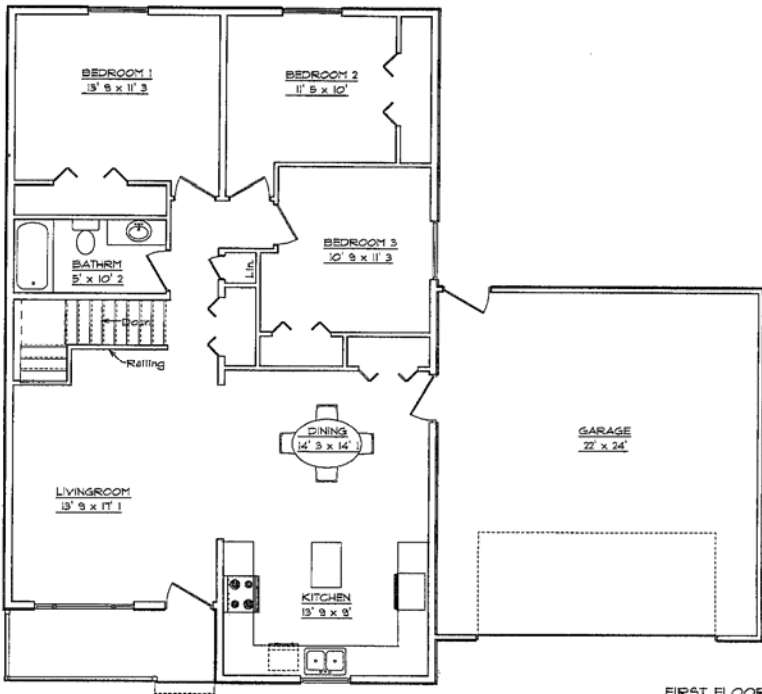


# NORTHLAND PARK ADDITION

## *The Viking*



1,263 s f



[www.jbrhomes.com](http://www.jbrhomes.com)

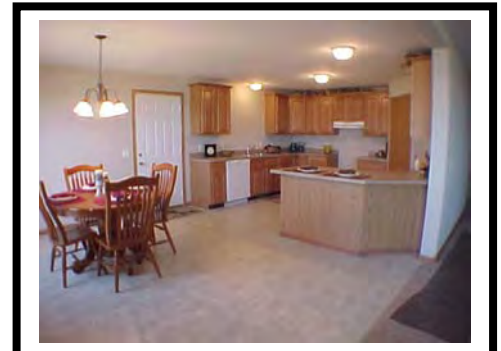
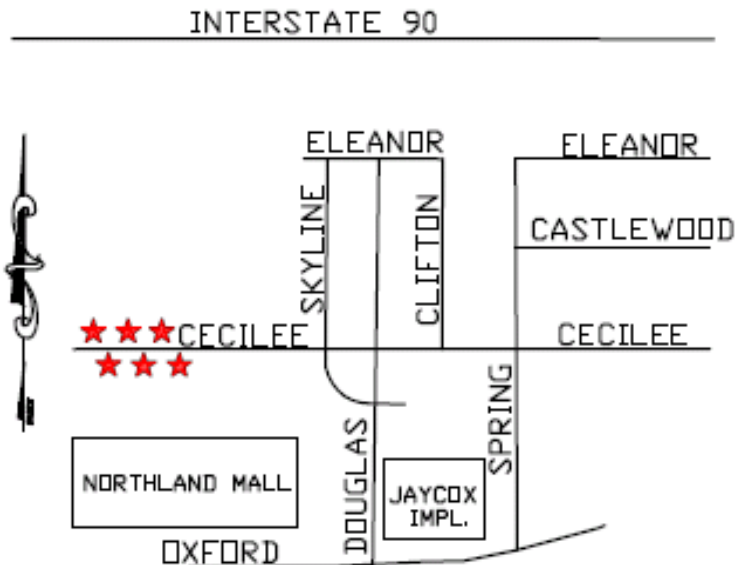
Mike Johnson · 507-376-4149 · [mikejohnson@frontiernet.net](mailto:mikejohnson@frontiernet.net)

*Where Quality is a Family Tradition!*

The Northland Park Addition are all single family homes with attached double garages. There are several floor plans for you to choose from. Cecilee Street is a quiet neighborhood with great neighbors! Give us a call for your personal showing!

## FEATURES INCLUDE:

- Poured concrete foundations and insulated.
- Lower level egress windows
- Maintenance-free vinyl siding w/ brick accent
- Oak cabinetry w/raised panel doors
- Beveled edge countertops
- 30 year shingles
- Seamless gutters
- Prefinished steel overhead door with operator
- All vinyl and carefree windows
- Carpet by Shaw
- Dishwasher, garbage disposal and range hood
- 90% plus energy efficient furnace
- Central air conditioning
- 200 amp electrical service



PRICES AND AVAILABILITY ARE SUBJECT TO CHANGE  
ID# 1027